



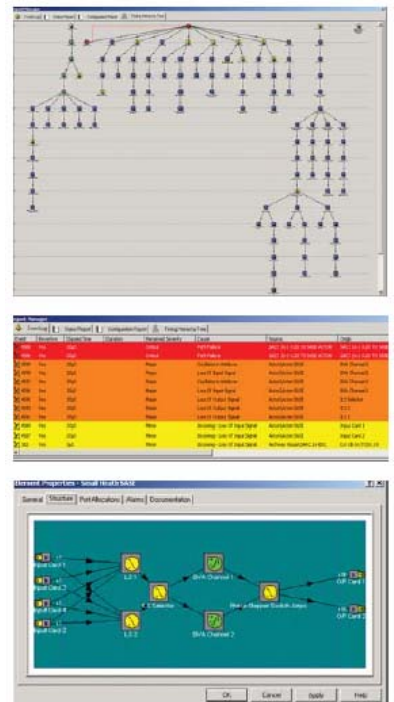
Sync Architect / V4.00

The only tool currently available specifically designed to help you create resilient synchronisation plans and diagnose distribution problems in your networks.

Network Synchronisation is a fundamental cornerstone of any telecommunications network. The correlation between effective network synchronisation and quality of service has long been established, yet the planning of synchronisation distribution is still a matter of pencil and paper.

- How confident are you in your synchronisation strategy ?
- Have you optimized you synchronisation investment ?
- Is synchronisation correctly distributed in your network ?
- Will your synchronisation plan survive failure conditions ?
- Is a timing loop just waiting to strike ?

Imagine being able to test your entire network synchronisation plan to destruction from the comfort of your desk, without affecting a single customer. That's exactly what Sync- Architect will enable you to do. Sync- Architect is a feature rich, stand alone, network simulation tool which will enable you to capture, document and war-game your networks.



Features

- Realistic network synchronisation simulation
- Multi-technology, multi-vendor support
- Intuitive multi-layered, graphical user interface
- Graphical network documentation
- Exportable textual and graphical reports
- Provides lockable electronic network models

Benefits

- Rapidly formulate resilient network design or fault find existing one
- Future proof-supports real world networks
- Easy to use and interpret, supports large or small networks
- Support international standards and your own policies
- Provides context sensitive network documentation
- Network information can be easily imported into your own reports
- Enables the simple, secure sharing of network documentation

The leading partner for your
synchronisation needs





Sync Architect / V4.00

The only tool currently available specifically designed to help you create resilient synchronisation plans and diagnose distribution problems in your networks.

How flexible is the tool ?

Sync Architect offers a unique level of user control. You can quickly and intuitively define your own network equipment models, everything from port allocations to source selection algorithms. Define your own signalling protocols and patch media, synchronisation qualities and sync status messaging schemes. You can choose ITU, ETSI or ANSI guidelines for jitter and wander control or create your own.

How much of my network can I model ?

The ability to dynamically create your own network equipment models, enables Sync Architect to simulate any multi-technology, multi-vendor network. Its hierarchical network views and fast navigation tool enable you to model the largest of networks. Accurately model your network locations. You can even create links between your networks connectivity, spare resources and physical locations. You can even create links between your network model and your external documents so you can use Sync Architect to provide a network context for your technical library.

How accurate is the simulation ?

Sync Architect realistically simulates the flow of synchronisation through your virtual network. It models the behaviour of every aspect of synchronisation routing functionality, including:

- Selection algorithms,
- Re-generation,
- Single and multi-channel synchronisation paths such as wave division multiplexed paths,
- Signal acquisition and propagation delays.

It also provides an ideal alarm management system which collects simulated synchronisation alarms from every component in your virtual networks.

How is synchronisation actually flowing in my network ?

The Timing Hierarchy Tree is automatically generated during simulation and clearly illustrates; synchronisation islands and loops. The Status Report provides a textual description of the synchronisation state of every component in your network.

Can I simulate equipment failures and re-configurations ?

Yes, you can simulate the failure of any object in your network model, from individual equipment components, all the way up to entire sub-networks or global systems such as the GPS facility. Fail your key synchronisation facilities and watch how your network will react. Is it as resilient as you expected ?

Modify equipment synchronisation parameters and watch the effect on your synchronisation distribution, ideal for planning moves and changes.

Can I export my result to my own reports ?

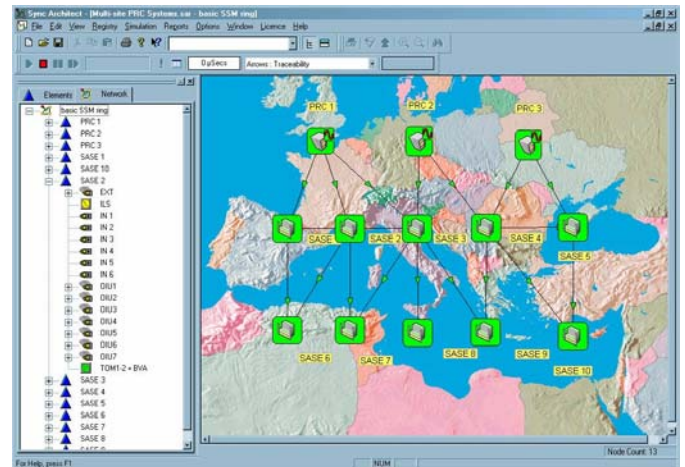
Of course, once you have satisfied yourself that your network synchronisation plan is sound then you can simply export the configuration of your equipment as a text file for inclusion in your own report. All network views and reports can be exported or printed directly to hardcopy.

Is it difficult to use ?

Not at all, the user environment is extremely intuitive and is based upon simple drag and drop, point and click actions and the whole system is supported with a comprehensive, context sensitive help scheme.

Can I share my work with my colleagues ?

Yes, network models may be exported as single electronic files making the storage and distribution of your designs so you can share them with the confidence that no one can make changes.



Sync Architect is already deployed in network design offices all over the world. Why not try the tool for yourself ? Please contact Oscilloquartz or your local representative to receive a free evaluation copy.

The leading partner for your
synchronisation needs